



47 Glentrammon Avenue , Green Street Green, BR6 6JY

Welcome to Glentrammon Avenue, Orpington - a charming semi-detached bungalow that offers a delightful living experience. This property boasts two cosy bedrooms, perfect for a small family or those looking for a bit of extra space. Situated in a peaceful neighbourhood, this home provides a serene escape from the hustle and bustle of everyday life.

With parking available for two vehicles, you'll never have to worry about finding a spot after a long day. The convenience of being chain-free means you can move in hassle-free and make this lovely bungalow your own without any delays.

Located close to local schools, this property is ideal for families with young children or those planning for the future. The proximity to local amenities ensures that everything you need is just a stone's throw away, making daily errands a breeze.

£425,000 Freehold

47 Glentrammon Avenue

, Green Street Green, BR6 6JY



- Chain free
- Walking distance to local amenities
- Bungalow
- EPC - D
- Close to local schools
- Council tax - D



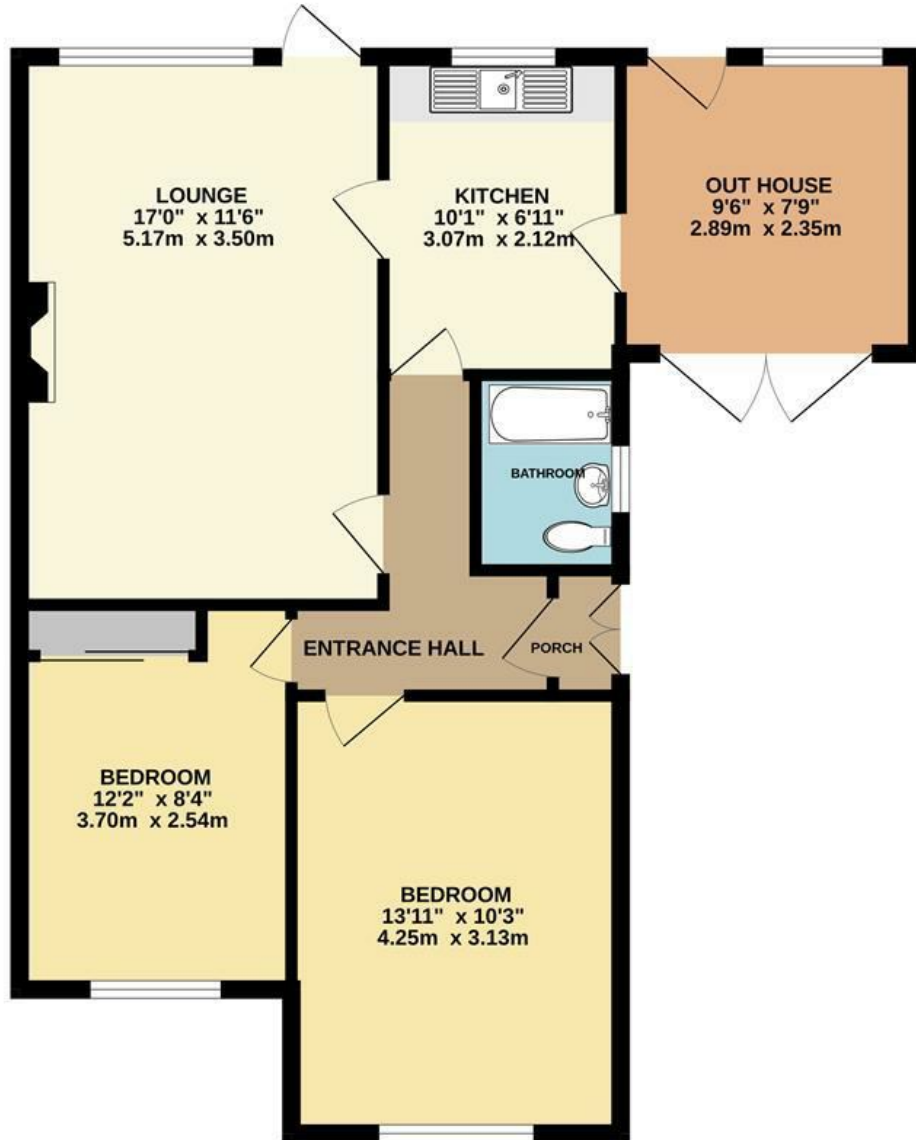
Directions





Floor Plan

GROUND FLOOR
701 sq.ft. (65.1 sq.m.) approx.



TOTAL FLOOR AREA : 701 sq.ft. (65.1 sq.m.) approx.

Whilst every attempt has been made to ensure the accuracy of the floorplan contained here, measurements of doors, windows, rooms and any other items are approximate and no responsibility is taken for any error, omission or mis-statement. This plan is for illustrative purposes only and should be used as such by any prospective purchaser. The services, systems and appliances shown have not been tested and no guarantee as to their operability or efficiency can be given.
Made with Metropix ©2024

These particulars, whilst believed to be accurate are set out as a general outline only for guidance and do not constitute any part of an offer or contract. Intending purchasers should not rely on them as statements of representation of fact, but must satisfy themselves by inspection or otherwise as to their accuracy. No person in this firm's employment has the authority to make or give any representation or warranty in respect of the property.

Energy Efficiency Rating		Current	Potential
Very energy efficient - lower running costs			
(92 plus) A			88
(81-91) B			
(69-80) C			
(55-68) D		68	
(39-54) E			
(21-38) F			
(1-20) G			
Not energy efficient - higher running costs			
England & Wales		EU Directive 2002/91/EC	