



2 Laxey Road, Green Street Green, Kent, BR6 6BL

Welcome to this charming property located on Laxey Road in the picturesque town of Orpington. This delightful end terrace house boasts 2 reception rooms, perfect for entertaining guests or simply relaxing with your loved ones. With 2 cosy bedrooms, there is ample space for a small family or for those who enjoy having a guest room or a home office.

The property features 1 bathroom, ideal for your daily routines and ensuring convenience for all residents. The house offers a warm and inviting atmosphere, making it a lovely place to call home.

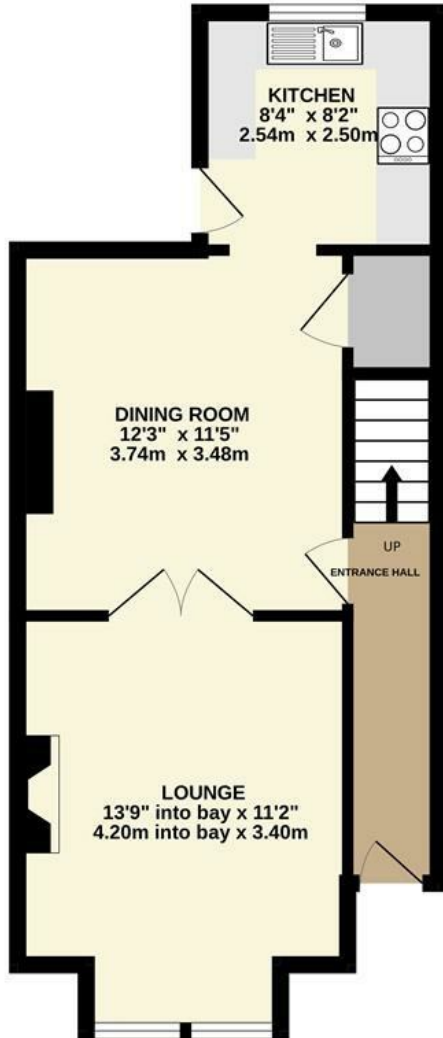
Situated in a desirable location, this property provides easy access to local amenities, schools, and transport links, making it a convenient choice for those looking for a well-connected home.

Don't miss the opportunity to make this lovely house on Laxey Road your new home sweet home in Orpington.

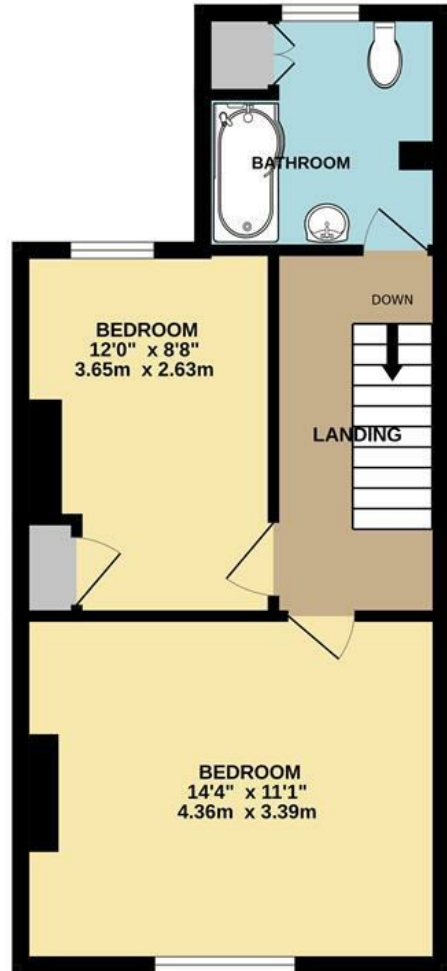
£500,000

- End terrace
- Generously sized through lounge/diner
- C. 100 foot garden
- Modern fitted bathroom
- Walking distance to local shops
- Within "outstanding" school catchment area
- 1 mile to Chelsfield station
- Under a mile to High Elms Country Park
- EPC- D
- Council tax- D

GROUND FLOOR
414 sq.ft. (38.5 sq.m.) approx.



1ST FLOOR
407 sq.ft. (37.8 sq.m.) approx.



TOTAL FLOOR AREA : 821 sq.ft. (76.3 sq.m.) approx.

Whilst every attempt has been made to ensure the accuracy of the floorplan contained here, measurements of doors, windows, rooms and any other items are approximate and no responsibility is taken for any error, omission or mis-statement. This plan is for illustrative purposes only and should be used as such by any prospective purchaser. The services, systems and appliances shown have not been tested and no guarantee as to their operability or efficiency can be given.
Made with Metropix ©2024

Energy Efficiency Rating		Current	Potential
Very energy efficient - lower running costs			
(92 plus) A			86
(81-91) B			
(69-80) C			
(55-68) D		61	
(39-54) E			
(21-38) F			
(1-20) G			
Not energy efficient - higher running costs			
England & Wales		EU Directive 2002/91/EC	