

Mead Way, Bromley, BR2 9ET

£550,000 Freehold

Spacious townhouse overlooking a green in a sought after area close to good local schools including Pickhurst and Ravensbourne and also within easy reach of all the amenities of Hayes, West Wickham and Bromley. The property comprises three bedrooms and family bathroom to the top floor, Large reception and fitted kitchen to the first floor and to the ground floor cloakroom, utility room and integral garage. Outside is a manageable rear garden with two patios, laid to lawn and tree and shrub borders, with driveway providing two off street parking spaces immediately to the front of the house.

ENTRANCE HALL



Opaque double glazed front door and window to side, coving, radiator, cloaks area and tile effect vinyl flooring.

CLOAKROOM

Opaque window to rear, low level WC and tile effect vinyl flooring.

UTILITY ROOM 12'2" x 5'4" (3.71 x 1.63)



Window and personal door to rear, space and plumbing for washing machine and dish washer, wall mounted Worcester combination boiler and personal door to garage.

LANDING

Window to rear and storage cupboard.

RECEPTION ROOM 16' x 16' (4.88m x 4.88m)



Two double glazed windows to front, coving and two radiators. Brick built gas feature fireplace, Virgin TV and telephone points.

FITTED KITCHEN 10'5" x 9'5" (3.18 x 2.87)



Double glazed window to rear, radiator, larder cupboard and tile effect vinyl flooring. Range of wall and base units with work surfaces over, local tiling, stainless steel sink with mixer tap and drainer, integrated electric oven and hob. Space for fridge freezer, space and plumbing for dish washer.

LANDING

Loft access hatch to spacious full height loft space with the potential for an extra room. (STPP)

BEDROOM ONE 14'4" x 9'2" (4.37 x 2.79)



Double glazed window to front, coving and radiator. Polished stripped wood floor and two fitted double wardrobes.

BEDROOM TWO 11'11" x 9'2" (3.63 x 2.79)



Window to rear, coving, radiator and polished stripped wood floor.

BEDROOM THREE 11'2" x 6'4" (3.4 x 1.93)



Double glazed window to front, coving, radiator, painted stripped wood floor and built in wardrobe.

FAMILY BATHROOM

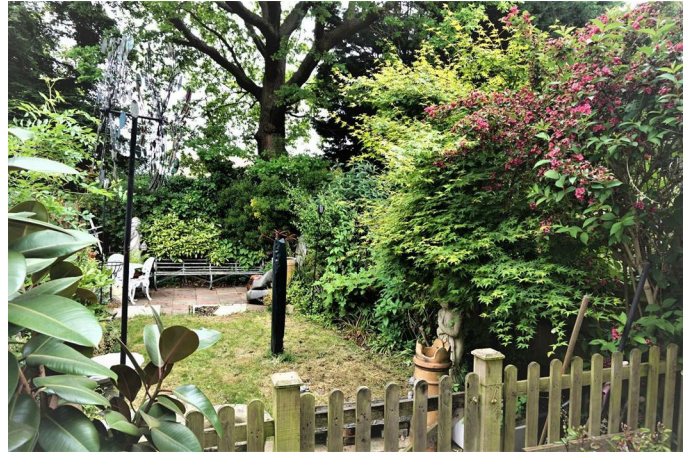
Opaque window to rear, fully tiled walls, radiator and tile effect flooring. Panel bath with shower mixer tap,

pedestal wash hand basin with mixer tap and mirrored bathroom cabinet over and low level WC.

INTEGRAL GARAGE 17'8" x 9'6" (5.38 x 2.9)

Up and over door to front, personal door to rear, power and light.

REAR GARDEN 45'0" (13.72)



Two patio areas, central laid lawn area with mature tree and shrub borders.

FRONTAGE 25'0" (7.62)



Driveway leading to garage providing off street parking for two cars.

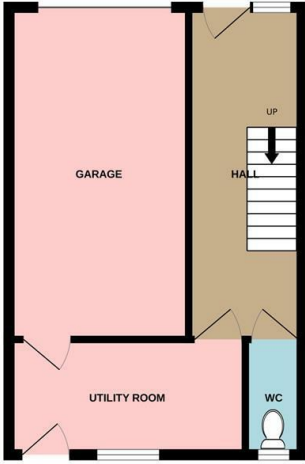
TOTAL FLOOR AREA

The internal area as per the Energy Performance Certificate is 100sqm (Approx 1076sqft)

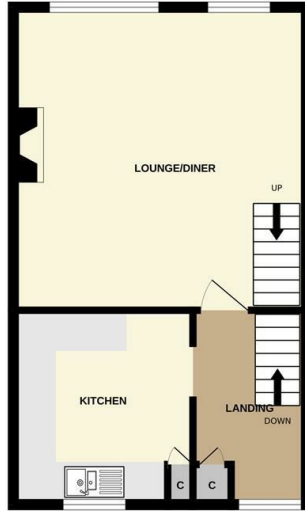
COUNCIL TAX BAND 'E'

Floor Plan

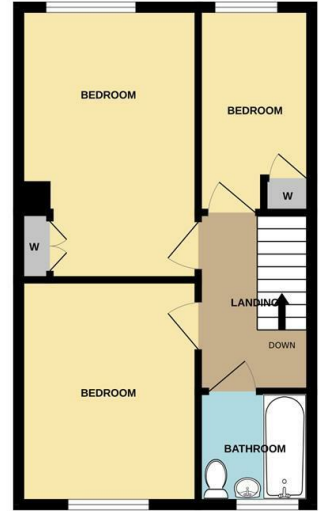
GROUND FLOOR



1ST FLOOR

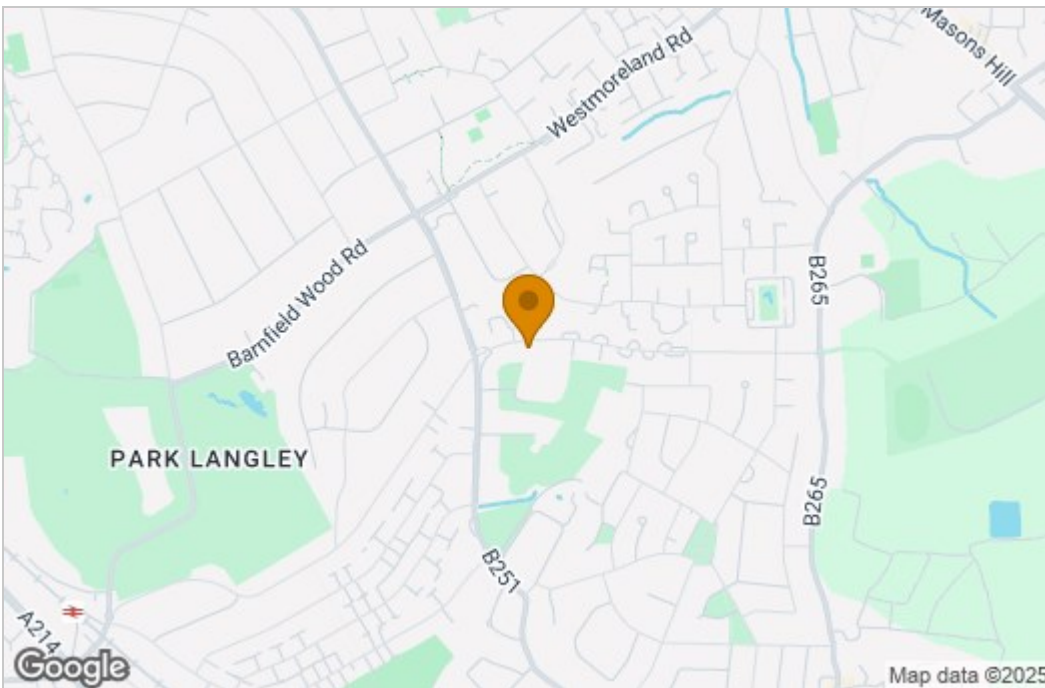


2ND FLOOR

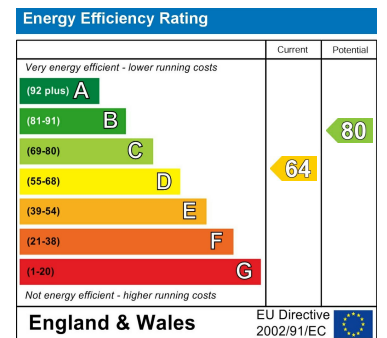


Whilst every attempt has been made to ensure the accuracy of the floorplan contained here, measurements of doors, windows, rooms and any other items are approximate and no responsibility is taken for any error, omission or mis-statement. This plan is for illustrative purposes only and should be used as such by any prospective purchaser. The services, systems and appliances shown have not been tested and no guarantee as to their operability or efficiency can be given.
Made with Metropix ©2023

Area Map



Energy Efficiency Graph



These particulars, whilst believed to be accurate are set out as a general outline only for guidance and do not constitute any part of an offer or contract. Intending purchasers should not rely on them as statements of representation of fact, but must satisfy themselves by inspection or otherwise as to their accuracy. No person in this firm's employment has the authority to make or give any representation or warranty in respect of the property.