



£1,800 PCM  
Flat 4 Blackbrook Lane  
, Bromley, BR2 8AY

£1,800 PCM



## Flat 4 Blackbrook Lane

, Bromley, BR2 8AY

A quite stunning two double bedroom, two bathroom luxury apartment, which is located in Bickley with excellent access to local amenities & stations. The property has high quality fixtures & fittings throughout, integrated appliances & off road parking as well as a communal garden.

### HALLWAY

**OPEN PLAN LOUNGE/KITCHEN**  
24'6" x 12'11" (7.47m x 3.94m)

### BEDROOM ONE

14'6" x 9'8" (4.42m x 2.97m)

### ENSUITE

### BEDROOM TWO

10'5" x 10'0" (3.2m x 3.05m)

### BATHROOM

### COMMUNAL GARDEN

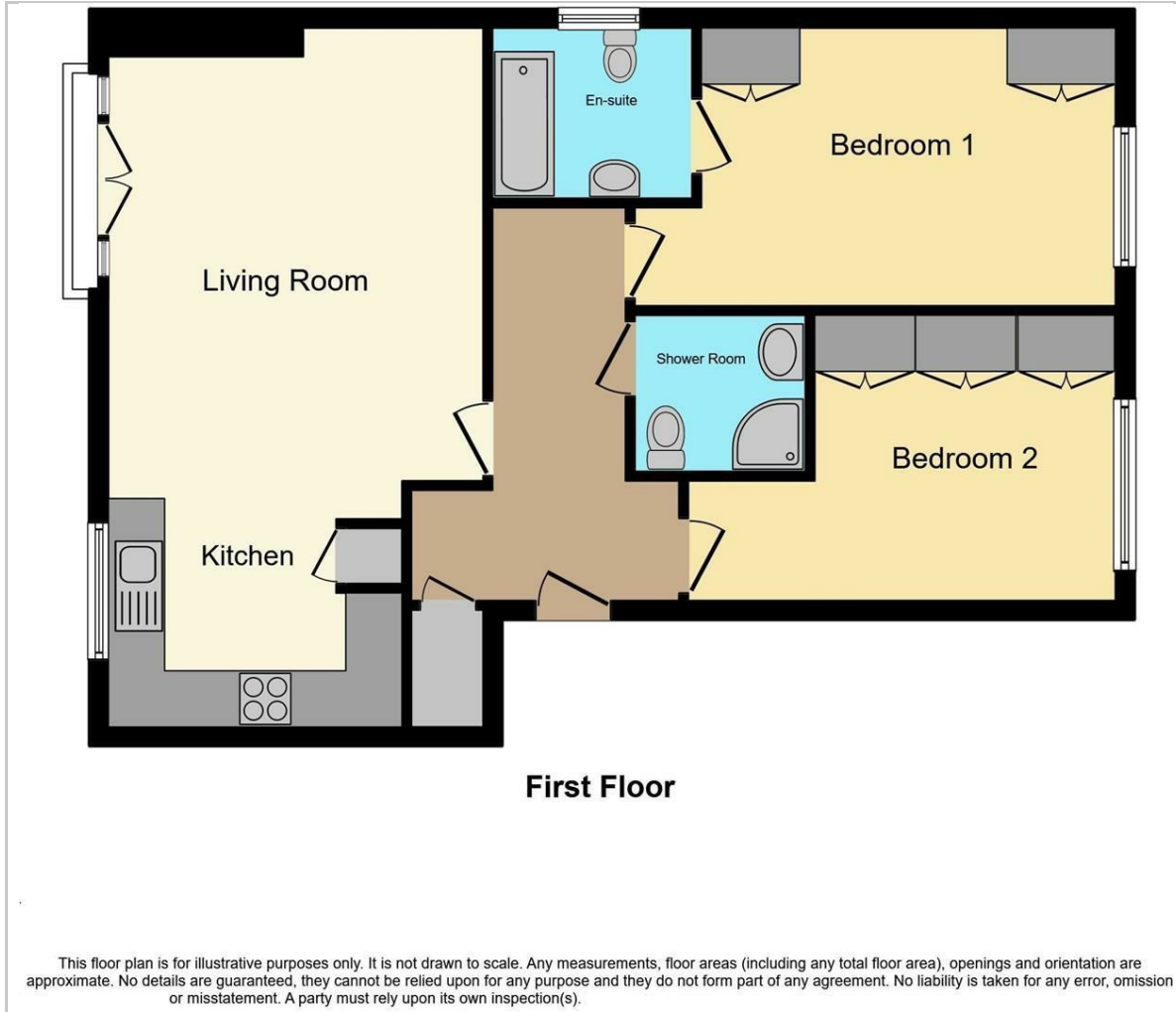
### ALLOCATED PARKING

### DIRECTIONS





## Floor Plan



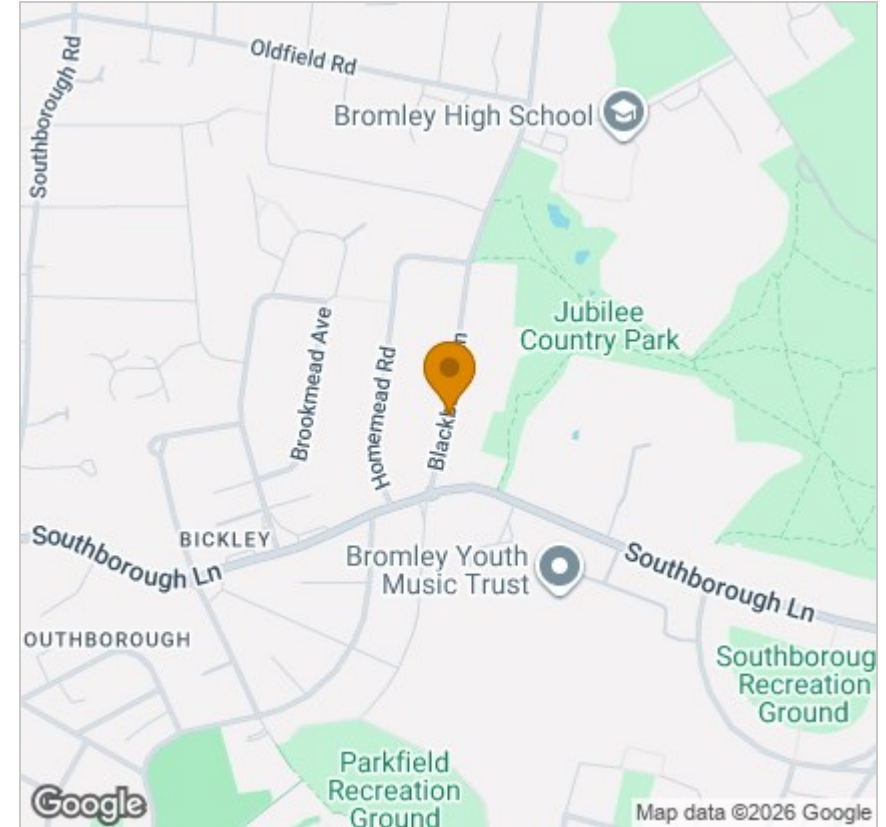
## Viewing

Please contact our Petts Wood Office on 01689 819991 if you wish to arrange a viewing appointment for this property or require further information.

These particulars, whilst believed to be accurate are set out as a general outline only for guidance and do not constitute any part of an offer or contract. Intending purchasers should not rely on them as statements of representation of fact, but must satisfy themselves by inspection or otherwise as to their accuracy. No person in this firm's employment has the authority to make or give any representation or warranty in respect of the property.

26 Station Square, Petts Wood, Kent, BR5 1NA  
 Tel: 01689 819991 Email: [pettswood@edmund.co.uk](mailto:pettswood@edmund.co.uk) <https://www.edmund.co.uk/>

## Area Map



## Energy Efficiency Graph

