



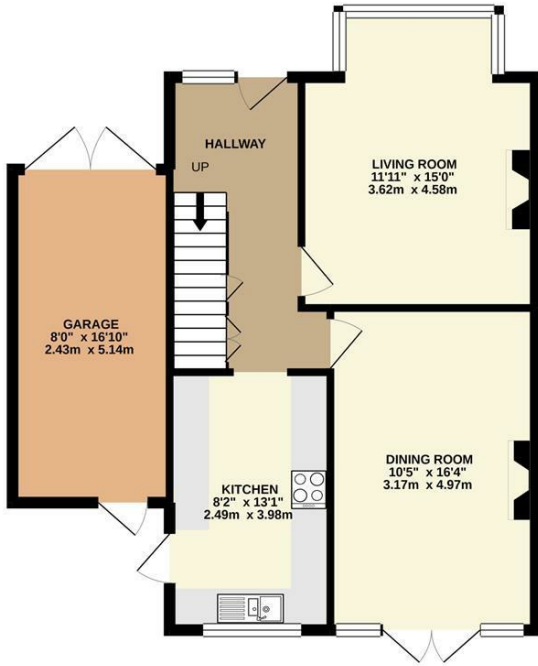
15 Tower Road, Orpington, Kent, BR6 0SG

A spacious, extended 4 bedroom family home with lovely garden, and being ideally placed for the mainline station, High Street with it's numerous amenities, a good selection of bus routes, and the highly regarded Newstead Wood and St Olaves Schools.

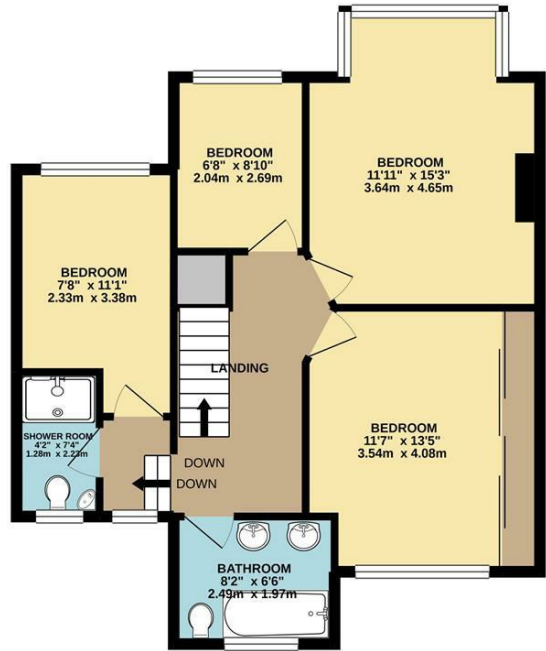
- Extended Family Home
- Four Bedrooms
- Two Reception Rooms
- New boiler
- Bathroom & Shower Room
- Garage & Parking
- Lovely Rear Garden (Approximately 90'0)
- Short Walk to Station and High Street
- Convenient for sought after Schools
- Viewing is highly recommended

£750,000

GROUND FLOOR
671 sq.ft. (62.4 sq.m.) approx.



1ST FLOOR
658 sq.ft. (61.1 sq.m.) approx.



EDMUND ESTATE AGENTS TEL 01689 821904

TOTAL FLOOR AREA : 1330 sq.ft. (123.5 sq.m.) approx.

Whilst every attempt has been made to ensure the accuracy of the floorplan contained here, measurements of doors, windows, rooms and any other items are approximate and no responsibility is taken for any error, omission or mis-statement. This plan is for illustrative purposes only and should be used as such by any prospective purchaser. The services, systems and appliances shown have not been tested and no guarantee as to their operability or efficiency can be given.
Made with Metropix ©2021

