



£2,200 Per Month
10 Mulbarton Court Kemnal Road
Chislehurst, BR7 6NE
£2,200 Per Month



10 Mulbarton Court Kemnal

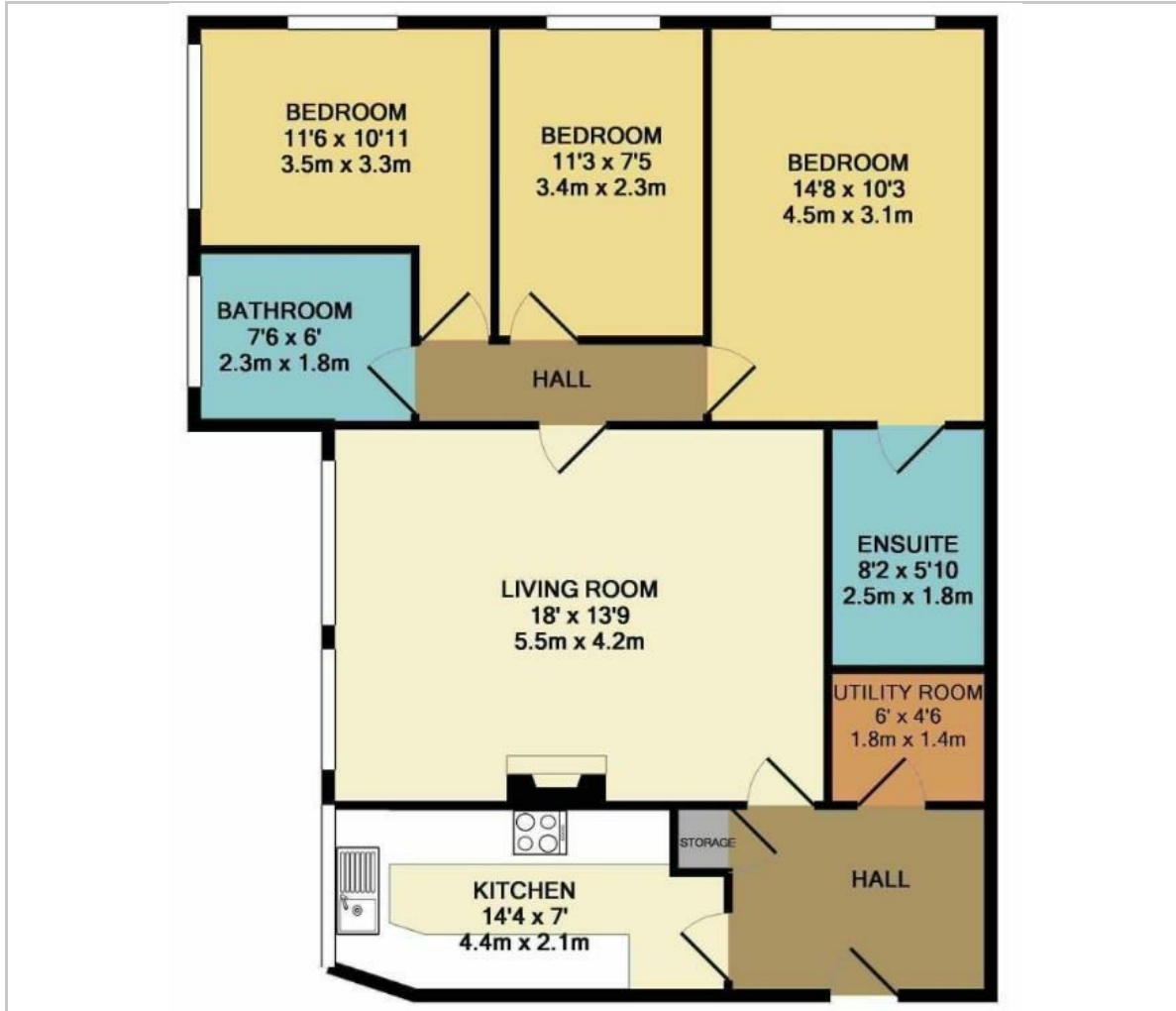
Chislehurst, BR7 6NE

Located on a private road with excellent access to Royal Parade, is this high quality three bedroom, two bathroom luxury apartment. Set behind electric gates the property features include allocated parking, extensive communal gardens and use of a tennis court. The property is available straight away and keys are held for your viewing.





Floor Plan



Viewing

Please contact our Petts Wood Office on 01689 819991 if you wish to arrange a viewing appointment for this property or require further information.

These particulars, whilst believed to be accurate are set out as a general outline only for guidance and do not constitute any part of an offer or contract. Intending purchasers should not rely on them as statements of representation of fact, but must satisfy themselves by inspection or otherwise as to their accuracy. No person in this firm's employment has the authority to make or give any representation or warranty in respect of the property.

26 Station Square, Petts Wood, Kent, BR5 1NA
 Tel: 01689 819991 Email: pettswood@edmund.co.uk <https://www.edmund.co.uk/>

Area Map



Energy Efficiency Graph

