



## Frequency Cottage, 6 High Street, Green Street Green, Kent, BR6 6BQ

\*\*\*\*\*CASH BUYERS ONLY\*\*\*\*\*

\*\*\*\*\*GUIDE PRICE £375,000-£400,000\*\*\*\*\*

Nestled in the charming High Street of Green Street Green, Orpington, this delightful cottage is a true gem waiting to be discovered. Boasting a reception room, kitchen/diner, 3 cosy bedrooms, and a well-appointed bathroom, this property offers a perfect blend of comfort and character.

One of the standout features of this lovely cottage is the stunning garden that surrounds it, providing a tranquil oasis for relaxation and outdoor enjoyment. Imagine sipping your morning tea surrounded by beautiful blooms and lush greenery - a true slice of paradise right at your doorstep.

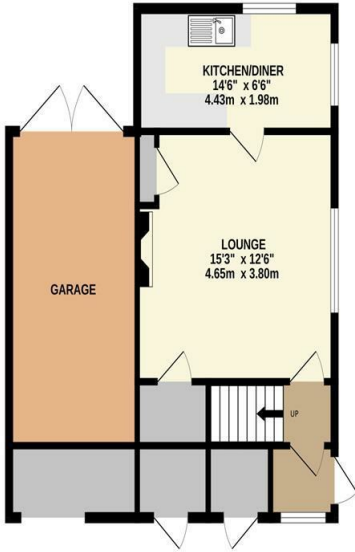
Convenience is key with parking available for up to 2 vehicles, ensuring you and your guests will always have a space to park without any hassle.

- CASH BUYERS ONLY
- Flying freehold
- Chain free
- Off street parking
- Beautiful mature garden
- Well proportioned rooms
- Close to local amenities
- EPC - E
- Council tax- D

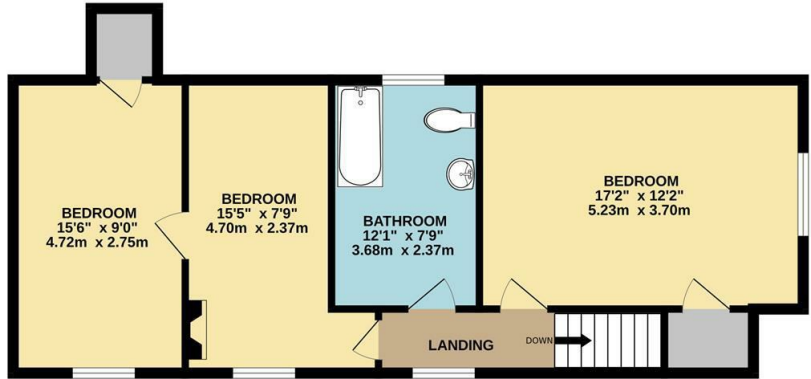
**£375,000**



GROUND FLOOR  
581 sq.ft. (54.0 sq.m.) approx.



1ST FLOOR  
652 sq.ft. (60.6 sq.m.) approx.



TOTAL FLOOR AREA: 1233 sq.ft. (114.6 sq.m.) approx.

Whilst every attempt has been made to ensure the accuracy of the floorplan contained here, measurements of doors, windows, rooms and any other items are approximate and no responsibility is taken for any error, omission or mis-statement. This plan is for illustrative purposes only and should be used as such by any prospective purchaser. The services, systems and appliances shown have not been tested and no guarantee as to their operability or efficiency can be given.  
Made with Metropix ©2024

Energy Efficiency Rating		Current	Potential
<i>Very energy efficient - lower running costs</i>			
(92 plus) <b>A</b>			
(81-91) <b>B</b>			79
(69-80) <b>C</b>			
(55-68) <b>D</b>		47	
(39-54) <b>E</b>			
(21-38) <b>F</b>			
(1-20) <b>G</b>			
<i>Not energy efficient - higher running costs</i>			
<b>England &amp; Wales</b>	EU Directive 2002/91/EC		