



## 5 Flint Close, Green Street Green, Kent, BR6 6BU

Nestled in the tranquil cul-de-sac of Flint Close, Green Street Green, Orpington, this charming semi-detached house presents an excellent opportunity for families and professionals alike. With three well-proportioned bedrooms, this property offers ample space for comfortable living. The master bedroom benefits from an en-suite bathroom, providing a private sanctuary for relaxation.

The house features two inviting reception rooms, perfect for entertaining guests or enjoying family time. These versatile spaces can be tailored to suit your lifestyle, whether you envision a cosy lounge or a formal dining area. The property also includes a second bathroom, ensuring convenience for all residents and visitors.

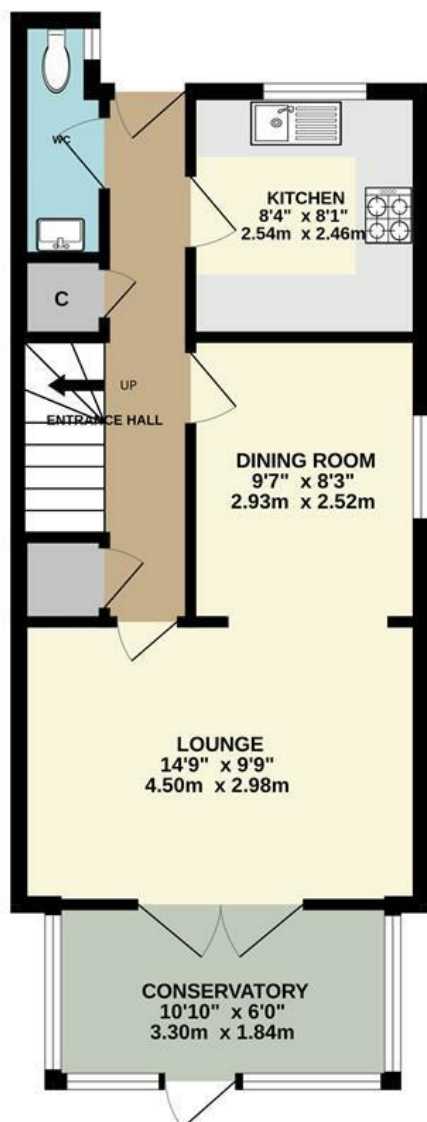
Parking is made easy with off street parking and garage, a valuable asset in this desirable area. Being chain-free, this home allows for a smooth and efficient purchase process, making it an attractive option for those looking to move quickly.

Flint Close is situated in a peaceful neighbourhood, ideal for those seeking a serene environment while still being within reach of local amenities and transport links. This property is a wonderful blend of comfort and practicality, making it a perfect choice for your next home. Don't miss the chance to make this delightful house your own.

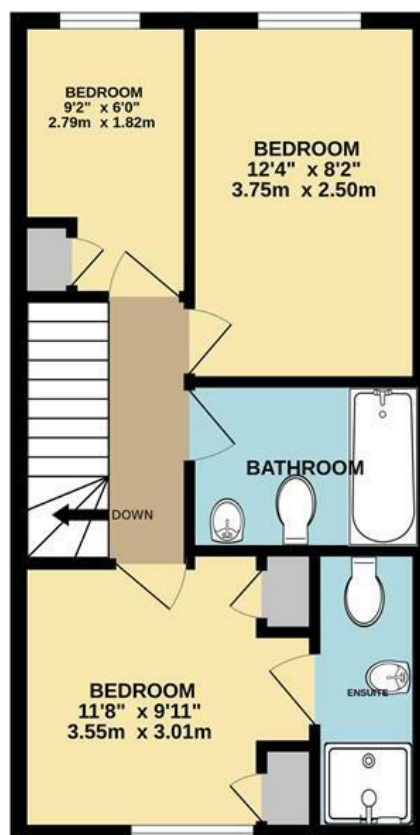
- Chain Free
- Semi-detached
- En-suite to master bedroom
- Garage
- Conservatory
- Well maintained garden
- Close to local shops and restaurants
- Chelsfield station near by
- Council- Bromley
- EPC-C

**£550,000**

GROUND FLOOR  
469 sq.ft. (43.6 sq.m.) approx.



1ST FLOOR  
391 sq.ft. (36.3 sq.m.) approx.



TOTAL FLOOR AREA : 860 sq.ft. (79.9 sq.m.) approx.

Whilst every attempt has been made to ensure the accuracy of the floorplan contained here, measurements of doors, windows, rooms and any other items are approximate and no responsibility is taken for any error, omission or mis-statement. This plan is for illustrative purposes only and should be used as such by any prospective purchaser. The services, systems and appliances shown have not been tested and no guarantee as to their operability or efficiency can be given.  
Made with Metropix ©2025

