



## 7 Homesdale Road, Petts Wood, Kent, BR5 1JS

Nestled in the charming area of Petts Wood, this delightful detached house on Homesdale Road offers a perfect blend of comfort and convenience. With four well-proportioned bedrooms, this property is ideal for families seeking a spacious and inviting home. The two reception rooms provide ample space for relaxation and entertaining, allowing for a versatile living experience.

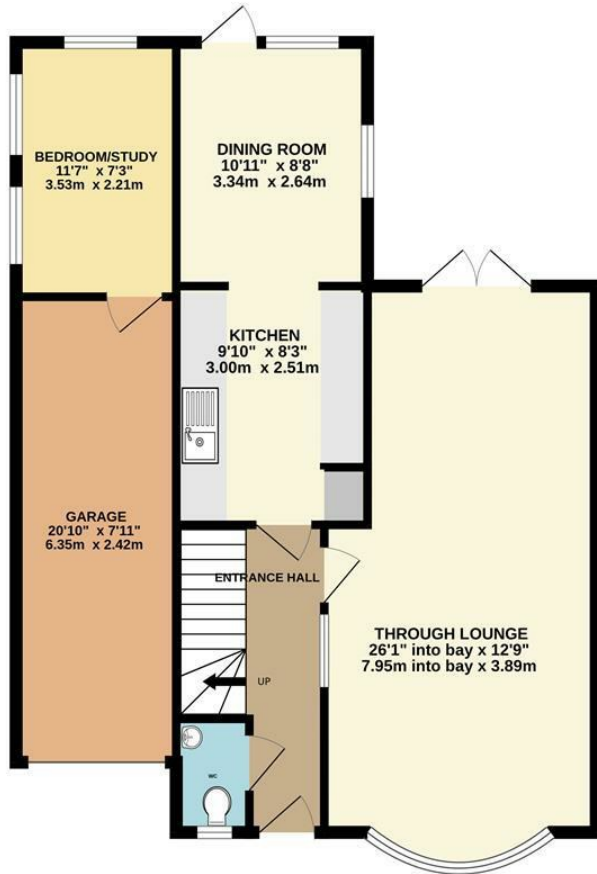
For those with vehicles, the property features off-street parking for up to three cars, along with a garage, providing secure and accessible parking options.

This home is not just a place to live; it is a sanctuary that offers both comfort and functionality in a sought-after location. With its generous living spaces and thoughtful amenities, this property is a wonderful opportunity for anyone looking to settle in the vibrant community of Petts Wood.

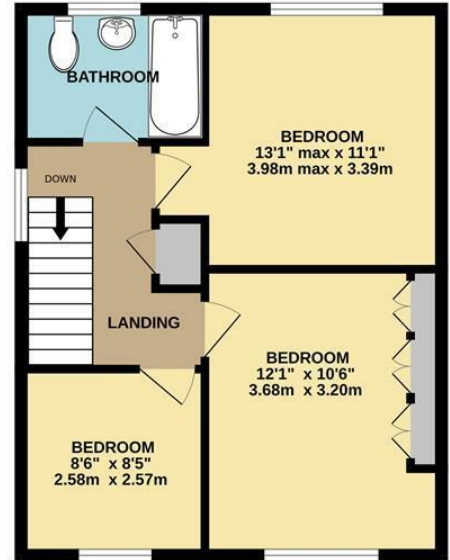
- Detached
- Garage
- Downstairs toilet
- Off street parking
- Outstanding school catchment area
- Walking distance to shops
- Walking distance to train station
- EPC - TBC
- Council tax - F

**£900,000**

GROUND FLOOR  
814 sq.ft. (75.6 sq.m.) approx.



1ST FLOOR  
472 sq.ft. (43.8 sq.m.) approx.



TOTAL FLOOR AREA : 1286 sq.ft. (119.4 sq.m.) approx.

Whilst every attempt has been made to ensure the accuracy of the floorplan contained here, measurements of doors, windows, rooms and any other items are approximate and no responsibility is taken for any error, omission or mis-statement. This plan is for illustrative purposes only and should be used as such by any prospective purchaser. The services, systems and appliances shown have not been tested and no guarantee as to their operability or efficiency can be given.  
Made with Metropix ©2025

Energy Efficiency Rating		
	Current	Potential
Very energy efficient - lower running costs		
(92 plus) <b>A</b>		
(81-91) <b>B</b>		
(69-80) <b>C</b>		
(55-68) <b>D</b>		
(39-54) <b>E</b>		
(21-38) <b>F</b>		
(1-20) <b>G</b>		
Not energy efficient - higher running costs		
<b>England &amp; Wales</b>	EU Directive 2002/91/EC	