



## 15 The Meadway, Chelsfield, Kent, BR6 6HH

Nestled in the charming area of The Meadway, Chelsfield, this delightful semi-detached bungalow offers a perfect blend of comfort and convenience. Built in the 1930s, the property exudes character and warmth, making it an inviting home for those seeking a peaceful retreat.

The bungalow features two spacious reception rooms, providing ample space for relaxation and entertaining. The two well-proportioned bedrooms are ideal for restful nights, while the bathroom is conveniently located to serve the needs of the household.

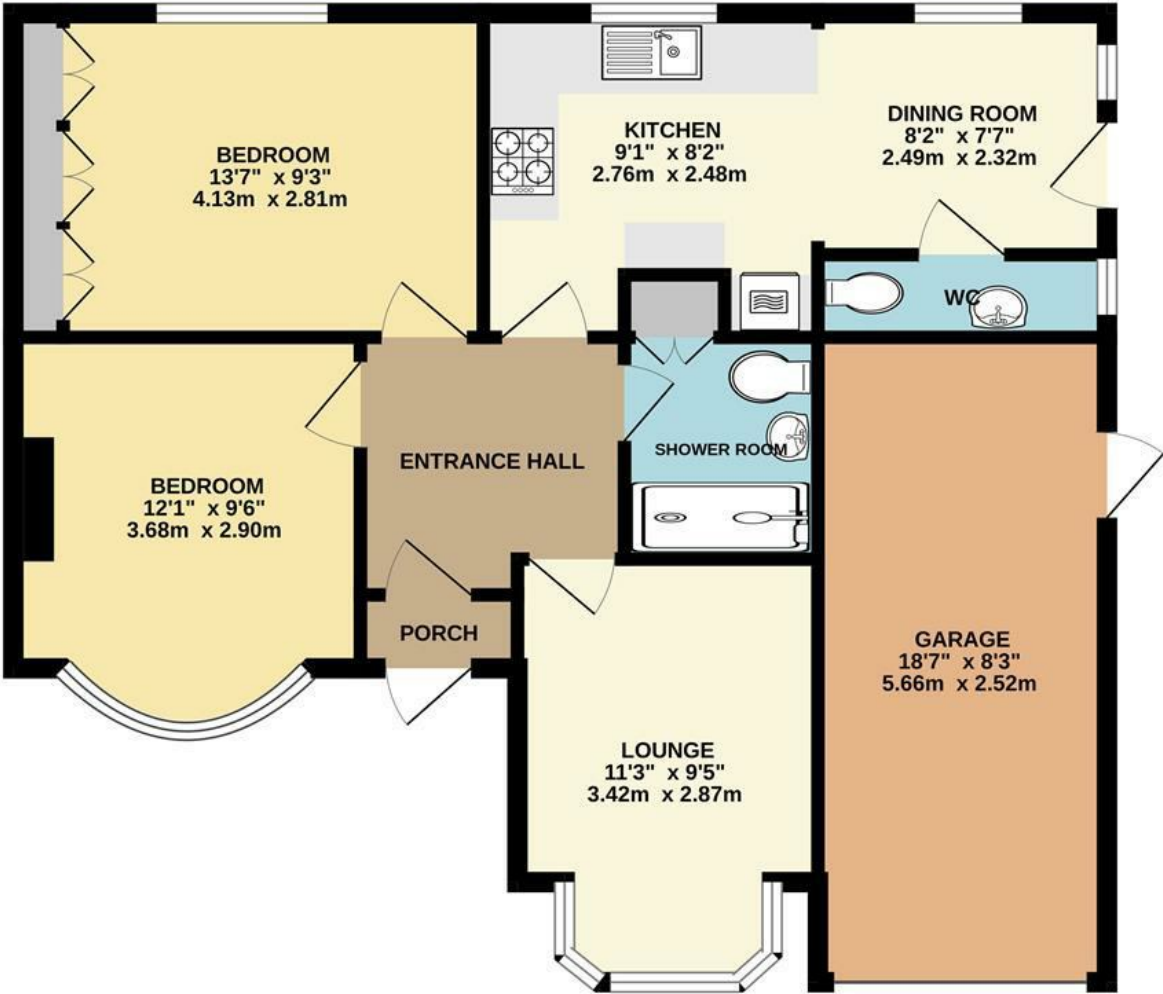
One of the standout features of this property is the parking space available for two vehicles, a rare find in such a desirable location. The bungalow is situated close to Chelsfield mainline station, making it an excellent choice for commuters. Additionally, residents will appreciate the proximity to a variety of shops, ensuring that daily necessities are just a short stroll away.

This property is perfect for those looking to enjoy a tranquil lifestyle while still being well-connected to local amenities and transport links. With its charming features and prime location, this bungalow is a wonderful opportunity for anyone seeking a new home in Chelsfield.

- 2 bedroom semi detached
- Kitchen/diner
- Seperate w/c
- Garage
- Off street parking
- Close to Chelsfield station
- Array of local shops close by
- EPC -D
- Council tax - D

**£500,000**

GROUND FLOOR



Whilst every attempt has been made to ensure the accuracy of the floorplan contained here, measurements of doors, windows, rooms and any other items are approximate and no responsibility is taken for any error, omission or mis-statement. This plan is for illustrative purposes only and should be used as such by any prospective purchaser. The services, systems and appliances shown have not been tested and no guarantee as to their operability or efficiency can be given.  
Made with Metropix ©2025

