



## 14 Fox Close, Green Street Green, Kent, BR6 6LR

\*\*\* Guide Price £475,000 to £500,000 \*\*\*

Nestled in the charming area of Fox Close, Green Street Green, this delightful townhouse presents an excellent opportunity for families and professionals alike. With three well-proportioned bedrooms, including a versatile fourth bedroom that can easily serve as a study, this property offers ample space to accommodate your lifestyle needs.

The ground floor features a convenient downstairs toilet and utility area, enhancing the practicality of daily living. The inviting living spaces are complemented by a lovely garden, perfect for outdoor relaxation or entertaining guests during the warmer months.

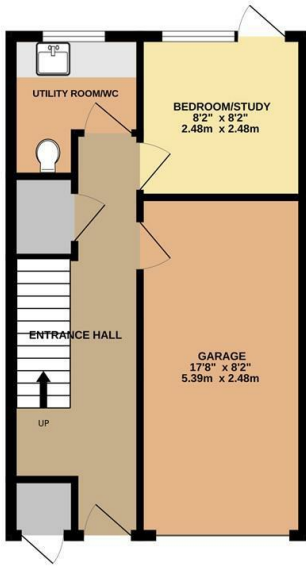
Additionally, the property boasts a garage, providing secure parking, off street parking and extra storage options. The combination of these features makes this townhouse not only a comfortable home but also a functional one, catering to the demands of modern living.

Fox Close is situated in a peaceful neighbourhood, offering a sense of community while remaining close to local amenities, schools and transport links. This property is an ideal choice for those seeking a blend of convenience and tranquillity. Don't miss the chance to make this charming townhouse your new home.

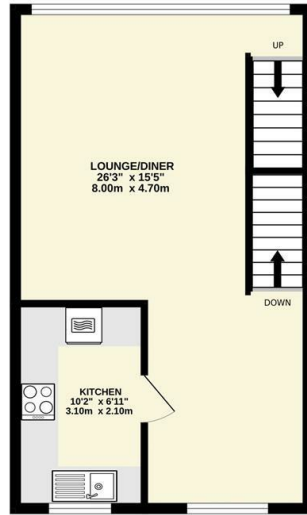
**£475,000**

- Green street Green location
- Garage
- Downstairs Toilet
- Nice Garden
- 3/4 Bedroom house
- Spacious accommodation over three floors
- Close to Chelsfield station and bus routes
- Close to good schools
- Council Tax D
- EPC to be confirmed.

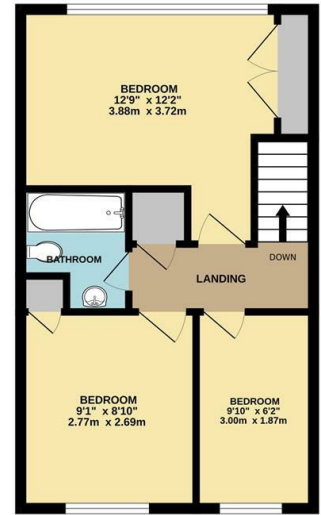
GROUND FLOOR  
411 sq.ft. (38.1 sq.m.) approx.



1ST FLOOR  
411 sq.ft. (38.1 sq.m.) approx.



2ND FLOOR  
411 sq.ft. (38.1 sq.m.) approx.



TOTAL FLOOR AREA : 1232 sq.ft. (114.4 sq.m.) approx.

Whilst every attempt has been made to ensure the accuracy of the floorplan contained here, measurements of doors, windows, rooms and any other items are approximate and no responsibility is taken for any error, omission or mis-statement. This plan is for illustrative purposes only and should be used as such by any prospective purchaser. The services, systems and appliances shown have not been tested and no guarantee as to their operability or efficiency can be given.  
Made with Metropix ©2025

