



## 2 Wentworth Close, Orpington, Kent, BR6 7EJ

\*\*\*\*\* Guide price £600,000 to £615,000 \*\*\*\*\*

Nestled in the charming Farnborough village, this delightful semi detached bungalow on Wentworth Close offers a perfect blend of comfort and convenience. This extended three-bedroom property is ideal for families or those seeking a peaceful retreat.

The bungalow is chain-free, allowing for a smooth and hassle-free purchase. Its well-designed layout provides ample living space, making it a welcoming home for both relaxation and entertaining. The property is situated in a prime location, just a stone's throw away from local shops, reputable schools, scenic walks, and inviting pubs, ensuring that all your daily needs are easily met.

The driveway offers convenient off-street parking, a valuable feature in this sought-after area. With its appealing surroundings and practical amenities, this bungalow presents an excellent opportunity for those looking to settle in a vibrant community.

In summary, this three-bedroom detached bungalow in Farnborough village is a rare find, combining spacious living with a fantastic location. Whether you are a first-time buyer or looking to downsize, this property is sure to impress. Do not miss the chance to make this lovely bungalow your new home.

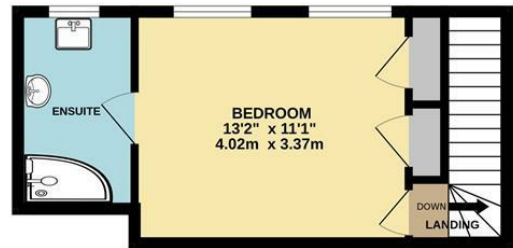
- Chain free
- Extended 3 bed bungalow
- Driveway
- Farnborough Village location
- Close to good schools
- Close to shops, pubs and nice walks
- EPC - C
- Council tax E

**£615,000**

GROUND FLOOR  
847 sq.ft. (78.7 sq.m.) approx.



1ST FLOOR  
257 sq.ft. (23.8 sq.m.) approx.



TOTAL FLOOR AREA : 1104 sq.ft. (102.6 sq.m.) approx.

Whilst every attempt has been made to ensure the accuracy of the floorplan contained here, measurements of doors, windows, rooms and any other items are approximate and no responsibility is taken for any error, omission or mis-statement. This plan is for illustrative purposes only and should be used as such by any prospective purchaser. The services, systems and appliances shown have not been tested and no guarantee as to their operability or efficiency can be given.  
Made with Metropix ©2025

