



£2,000 PCM
20 Turnberry Way
, Crofton, BR6 8DR
£2,000 PCM

4 2 1 C

20 Turnberry Way

, Crofton, BR6 8DR

Nestled in the charming area of Crofton, Turnberry Way presents an exceptional opportunity to acquire a delightful townhouse. This well-appointed property boasts four spacious bedrooms, making it an ideal home for families or those seeking extra space for guests or a home office. The layout includes a comfortable reception room, perfect for entertaining or relaxing after a long day.

The townhouse features two modern bathrooms, ensuring convenience for all residents. The design of the home promotes a harmonious flow between the living spaces, creating an inviting atmosphere throughout.

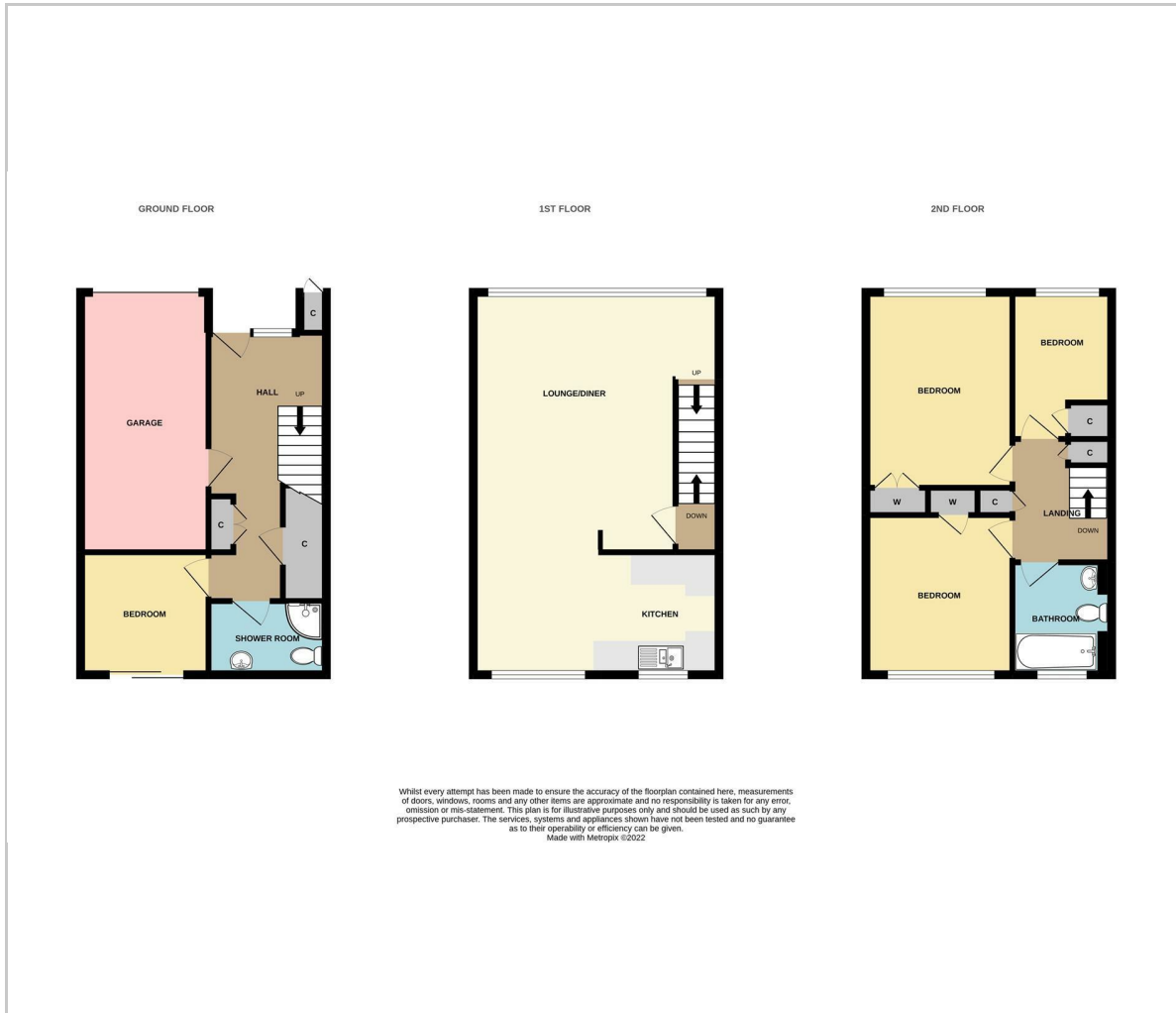
In addition to its generous living accommodations, the property offers parking for one vehicle, a valuable asset in this sought-after location. Crofton is known for its friendly community and excellent local amenities, including shops, schools, and parks, making it a wonderful place to call home.

This townhouse on Turnberry Way is not just a property; it is a lifestyle choice, offering both comfort and convenience in a picturesque setting. Whether you are looking to settle down or invest, this home is sure to meet your needs. Do not miss the chance to view this splendid property and envision your future in this lovely part of Crofton.





Floor Plan



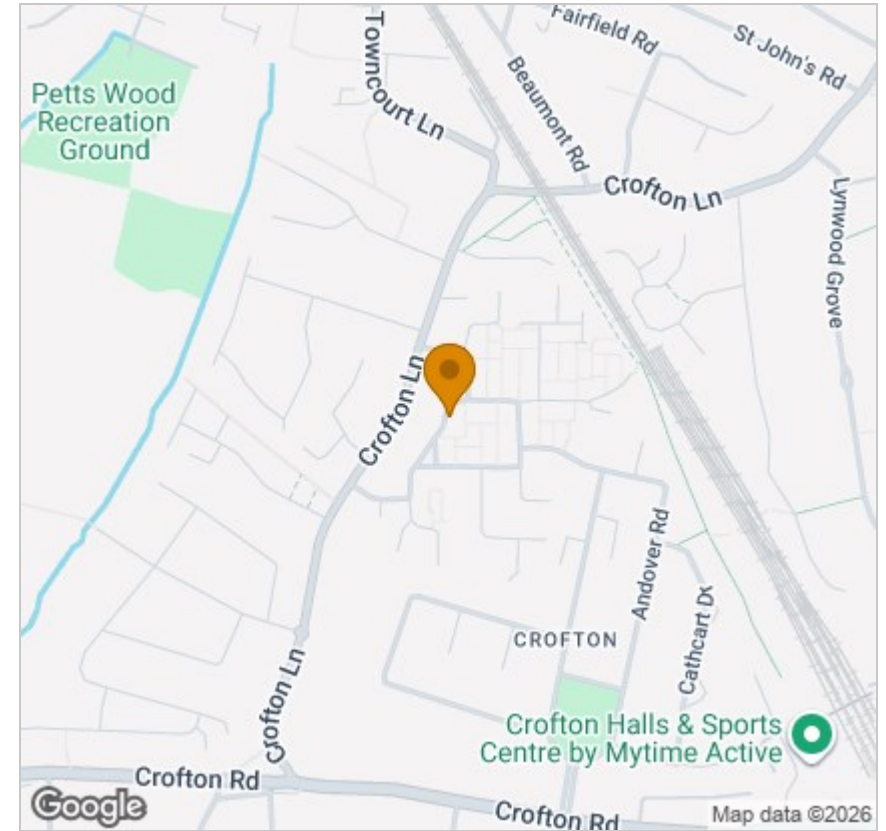
Viewing

Please contact our Petts Wood Office on 01689 819991 if you wish to arrange a viewing appointment for this property or require further information.

These particulars, whilst believed to be accurate are set out as a general outline only for guidance and do not constitute any part of an offer or contract. Intending purchasers should not rely on them as statements of representation of fact, but must satisfy themselves by inspection or otherwise as to their accuracy. No person in this firm's employment has the authority to make or give any representation or warranty in respect of the property.

26 Station Square, Petts Wood, Kent, BR5 1NA
Tel: 01689 819991 Email: pettswood@edmund.co.uk <https://www.edmund.co.uk/>

Area Map



Energy Efficiency Graph

