



Herron Court, Bromley, BR2 0QX

£225,000 Leasehold

Beautifully presented 'Chain Free' one double bedroom front facing flat on the top floor of a purpose built block offering fantastic views over Bromley. Located close to shops and a short walk to Bromley South with its fast links to London and all the shops and amenities of Bromley town centre, the property comprises of double bedroom, remodelled bathroom, large lounge and a modern new fitted kitchen with integrated appliances. Benefits include modern low cost heating and low maintenance costs, well maintained communal gardens to rear and allocated parking bay to front.

COMMUNAL ENTRANCE



Secure entry phone operated front door leads into communal entrance hall with stairs to all floors.

ENTRANCE HALL 8'5 x 3'1 (2.57m x 0.94m)

Hardwood front door leads into entrance hall with wood effect laminate flooring, wall mounted entry phone handset and consumer unit.

LOUNGE 13'1 x 9'3 (3.99m x 2.82m)



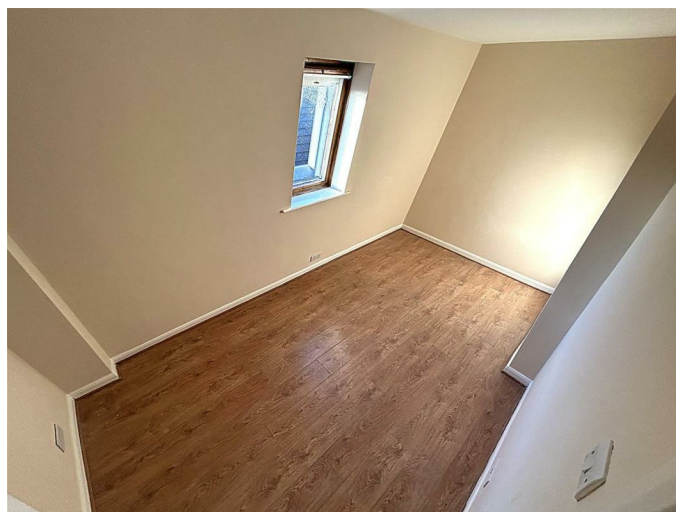
Double glazed window to front, wall mounted electric heater and wood effect laminate flooring.

FITTED KITCHEN 12' x 6'1 (including cupboard) (3.66m x 1.85m (including cupboard))



Double glazed window to side, airing cupboard and vinyl flooring. Newly installed kitchen with a range of white wall and base units with work surfaces and returns over, stainless steel sink with mixer tap and drainer, integrated four ring electric hob with oven below and extractor hood over, washing machine and under counter fridge.

DOUBLE BEDROOM 13'5 x 6'10 (4.09m x 2.08m)



Double glazed window to side and wood effect laminate flooring.

BATHROOM 8' x 5' (2.44m x 1.52m)



Fully tiled walls to bath area, extractor fan, vinyl floor and wall mounted electric heater. Panel bath with mono bloc mixer tap, screen and shower over with wall mounted controls, low level WC and pedestal wash hand basin with mirror over.

COMMUNAL GROUNDS & PARKING



Well maintained communal gardens to rear and allocated parking space to front.

LEASE & CHARGES

There are approximately 89 years remaining on the lease and the service charge was £1172.68.

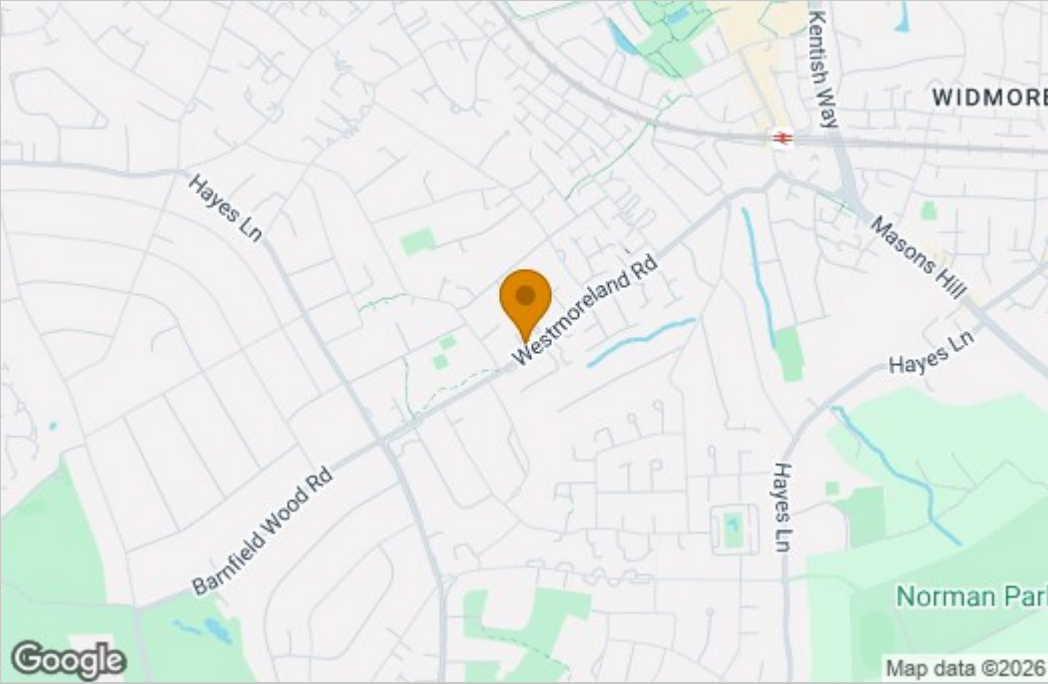
TOTAL FLOOR AREA

The internal area as per the Energy Performance Certificate is 36sqm (Approximately 388sqft)

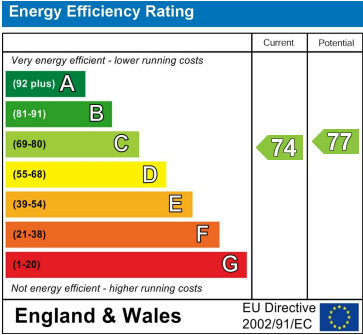
COUNCIL TAX BAND 'C'

Floor Plan

Area Map



Energy Efficiency Graph



These particulars, whilst believed to be accurate are set out as a general outline only for guidance and do not constitute any part of an offer or contract. Intending purchasers should not rely on them as statements of representation of fact, but must satisfy themselves by inspection or otherwise as to their accuracy. No person in this firms employment has the authority to make or give any representation or warranty in respect of the property.