

Beckenham/Bromley

143b Westmoreland Road
Bromley
Kent BR2 0TY

T: 020 8464 3030

E: parklangley@edmund.co.uk



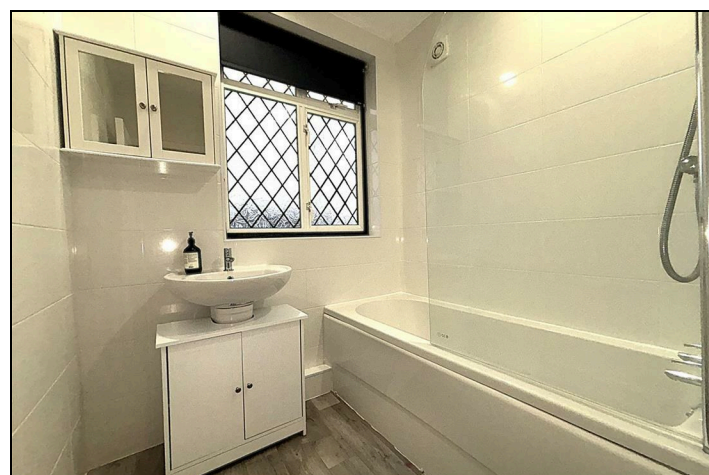
Offices also at:

Green St Green
T: 01689 850136

Orpington
T: 01689 821904

Petts Wood
T: 01689 819991

Lettings
T: 01689 850983



57 Lancing Road, Orpington, Kent, BR6 0QU

FREEHOLD

£700,000

A fantastic opportunity to acquire this 1930s three-bedroom detached family home, positioned on a sought-after residential road just moments from Orpington High Street, fast London train links, and an excellent selection of shops, restaurants, cinema and The Walnuts Leisure Centre. The ground floor offers a generous through 29'5 x 12'4 lounge/diner, fitted kitchen with appliances and ground floor cloakroom. Upstairs features three well sized bedrooms, family bathroom and separate WC. Additional highlights include gas central heating, double glazing, a large private rear garden, garage and off-street parking. Properties of this type and location are rarely available – early viewing is strongly advised.

Energy Efficiency Rating	
Current	Potential
Very energy efficient - lower running costs	
A (92 plus)	
B (81-91)	
C (69-80)	
D (55-68)	
E (39-54)	
F (21-38)	
G (1-20)	
Not energy efficient - higher running costs	
56	86

England & Wales EU Directive 2002/91/EC

- CHAIN FREE DETACHED FAMILY HOME
- 29'5 X 12'4 LOUNGE/DINER
- CLOSE TO MAIN LINE STATION, GOOD SCHOOLS & ORPINGTON HIGH STREET
- GARAGE & OFF STREET PARKING
- THREE BEDROOMS
- FAMILY BATHROOM & SEPARATE WC
- MODERN FITTED KITCHEN WITH INTEGRATED APPLIANCES
- 75' X 31' REAR GARDEN

ENTRANCE HALL 14'8 x 6'1 (4.47m x 1.85m)

Hardwood front door with opaque glazed insert and window with opaque window to side. Stairs up, radiator and under stair cupboard.

LOUNGE 14'5" x 12'4" (into bay) (4.4 x 3.78 (into bay))

Double glazed lead light bay window to front, two arched stained glass windows to side, radiator and gas coal effect feature fireplace with wooden mantle and stone hearth.

DINING ROOM 13'10" x 11'1" (4.24 x 3.4)

Double glazed sliding doors to rear and radiator.

FITTED KITCHEN 12'1" x 7'5" (3.69 x 2.27)

Double glazed window to rear, window and personal door to side. Range of modern wall and base units with work surfaces over and local tiling, FRANKE sink with mixer tap and drainer, integrated NEFF four ring induction hob with NEFF double oven below and extractor hood over. Space and plumbing for washing machine and space for fridge freezer.

CLOAKROOM

Low level WC, wall mounted vanity wash hand basin, extractor fan, local tiling and wood effect vinyl flooring.

LANDING 10'1 x 7'9 (3.07m x 2.36m)

Opaque double glazed window to side and loft access hatch.

BEDROOM ONE 15'1" x 12'5" (into bay) (4.61 x 3.8 (into bay))

Double glazed leadlight bay window to front and radiator.

BEDROOM TWO 13'11" x 10'9" (4.26 x 3.28)

Double glazed window to rear, coving and radiator. Tow sets of fitted wardrobes.

BEDROOM THREE 9'0" x 7'10" (2.76 x 2.4)

Double glazed window to rear, radiator and built in double wardrobe..

FAMILY BATHROOM 7'1 x 6'1 (2.16m x 1.85m)

Opaque double glazed window to front, radiator, fully tiled walls and wood effect vinyl flooring. Panel bath with wall mounted thermostatic shower mixer tap over, pedestal wash hand basin with mono bloc mixer tap, extractor fan and airing cupboard.

SEPARATE WC

Opaque double glazed window to side, low level WC and wood effect vinyl flooring.

REAR GARDEN 75' x 31' (22.86m x 9.45m)

Patio area leads to laid lawn with mature tree and shrub borders. Wooden storage shed to rear.

GARAGE

Garage to side of house with up and over door to front and personal door to rear.

FRONTAGE

Driveway providing off street parking with laid lawn area to side.

TOTAL FLOOR AREA

The internal area as per the Energy Performance Certificate is 93sqm (Approx. 1001sqft)

COUNCIL TAX BAND 'F'

Directions

From the War Memorial roundabout head up Spur Road and take the second turning on your left into Lancing Road. Follow the road around the bend and the property is about half way up on the left hand side.



Whilst every attempt has been made to ensure the accuracy of the floorplan contained here, measurements of doors, windows, rooms and any other items are approximate and no responsibility is taken for any error, omission or mis-statement. This plan is for illustrative purposes only and should be used as such by any prospective purchaser. The services, systems and appliances shown have not been tested and no guarantee as to their operability or efficiency can be given.
Made with Metropix ©2026