



Hayes Road Bromley, BR2 9AB

£900,000 Freehold



- 5 bed Semi Detached Period House with 1834Sq Ft of Accommodation
- Large garden
- Under one mile to Bromley South station with good links into London terminals
- Off street parking
- In need of updating to make this a beautiful family home
- The Glades shopping centre is near by
- Superb primary and secondary schools close
- Situated close to Norman park ideal for dog walkers and runners.
- Council tax F
- EPC to be confirmed





Road Map



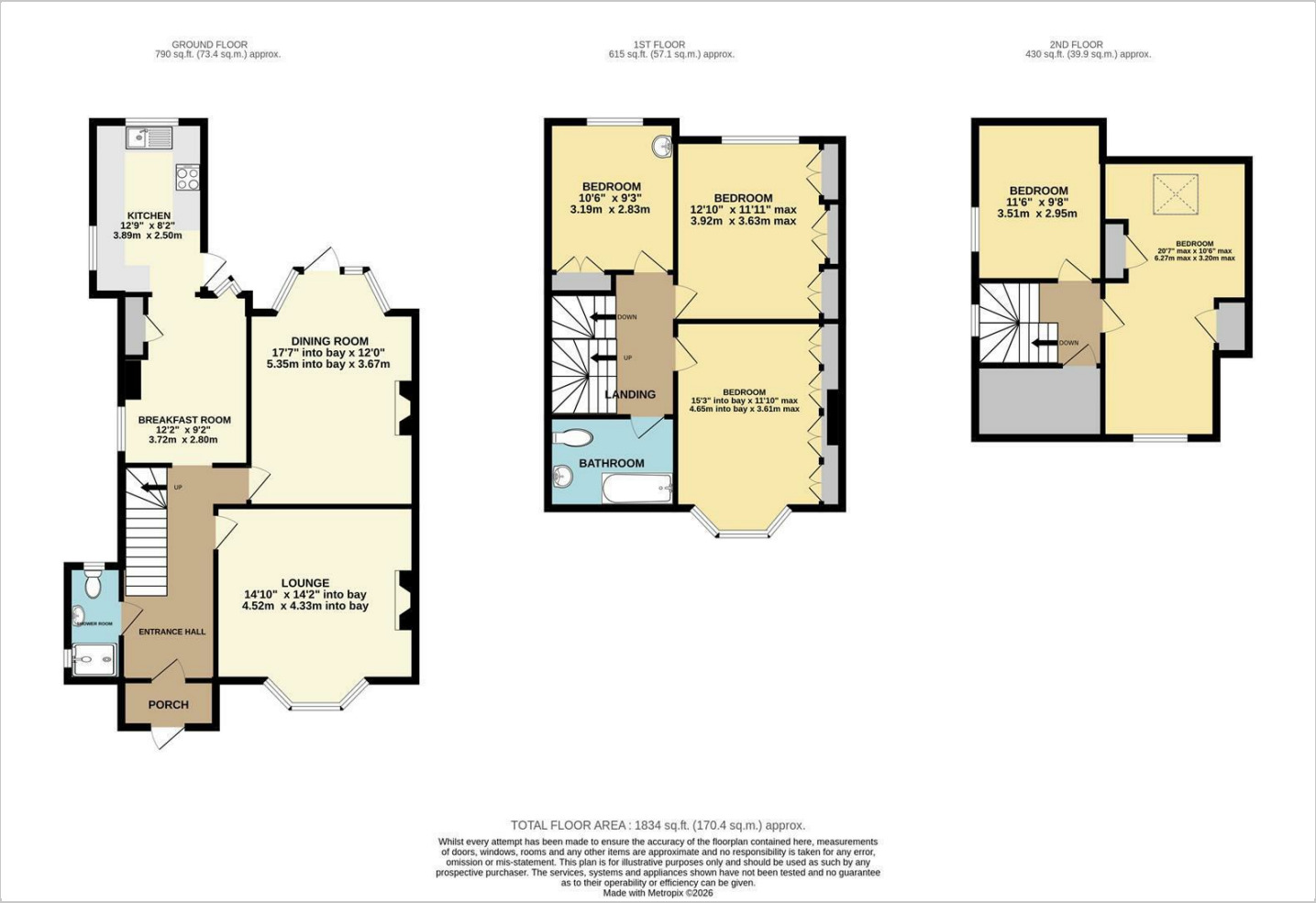
Hybrid Map



Terrain Map



Floor Plan



Viewing

Please contact our Green Street Green Office on 01689 850136 or Orpington@edmund.co.uk should you wish to arrange a viewing appointment for this property or require further information.

Energy Efficiency Graph



These particulars, whilst believed to be accurate are set out as a general outline only for guidance and do not constitute any part of an offer or contract. Intending purchasers should not rely on them as statements of representation of fact, but must satisfy themselves by inspection or otherwise as to their accuracy. No person in this firms employment has the authority to make or give any representation or warranty in respect of the property.