



**62 Ash Row, Bromley, Kent, BR2 8DY**  
**£625,000**

62 Ash Row, Bromley, Kent, BR2  
8DY

- Four Well Proportioned Bedrooms
- Versatile Annex
- West Facing Garden
- Ample Parking For Up To 6 Cars
- Lovely Sunny Conservatory
- Excellent for Local Schools
- Council Tax Band D



Nestled in the desirable area of Ash Row, Bromley, this charming semi-detached house presents an excellent opportunity for families seeking a spacious and comfortable home. Boasting four well-proportioned bedrooms, this property is perfect for those who value both space and functionality. The house features a welcoming reception room, ideal for entertaining guests or enjoying quiet family evenings.

With two modern bathrooms, morning routines will be a breeze, ensuring convenience for all members of the household. The property also includes a versatile annex, which can serve as a guest suite, home office, or playroom, catering to a variety of lifestyle needs.

One of the standout features of this home is its west-facing garden, which offers a delightful outdoor space to relax and unwind, basking in the afternoon sun. The garden is perfect for family gatherings, barbecues, or simply enjoying a peaceful moment in nature.

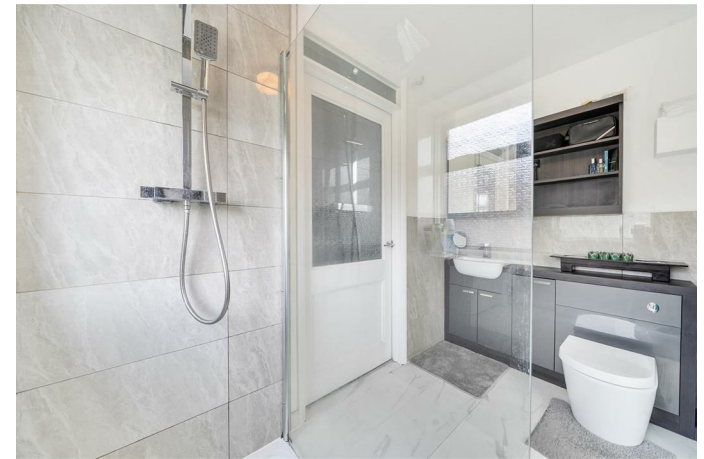
Parking will never be an issue here, as the property provides ample space for up to six vehicles, making it ideal for larger families or those who enjoy hosting visitors. Additionally, the absence of an onward chain simplifies the buying process, allowing for a smoother transition into your new home.

Situated within excellent school catchments, this property is perfect for families prioritising education. With a range of local amenities and transport links nearby, Ash Row offers a wonderful blend of suburban tranquillity and accessibility.

In summary, this semi-detached house in Bromley is a fantastic opportunity for those seeking a spacious family home in a sought-after location. With its generous living space, versatile annex, and beautiful garden, it is sure to appeal to a wide range of buyers.

## Viewing

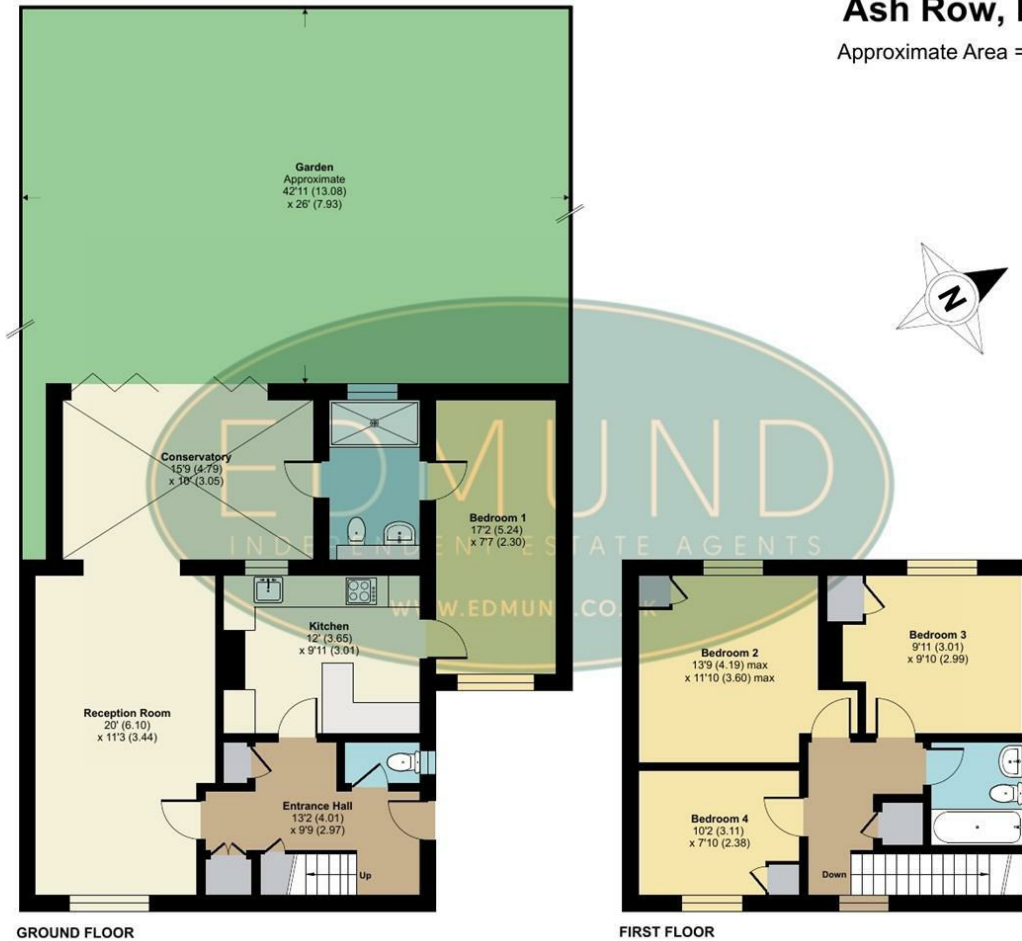
Strictly by appointment with Edmunds Petts Wood 01689 819991. If there is any point which is of particular importance to you we invite you to discuss this with us, especially before you travel to view the property.



# Ash Row, Bromley, BR2

Approximate Area = 1355 sq ft / 125.8 sq m

For identification only - Not to scale



GROUND FLOOR

FIRST FLOOR

Floor plan produced in accordance with RICS Property Measurement 2nd Edition, Incorporating International Property Measurement Standards (IPMS2 Residential). © nche.com 2026. Produced for Edmund Estate Agents. REF: 1455221

### IMPORTANT NOTES:

1. Every care has been taken in the preparation of these particulars but their accuracy is not guaranteed and they do not form part of the contract. Descriptions are given in good faith and as an opinion of the Agents - not as a statement of fact. 2. Measurements are approximate and any reference to any particular use of any part of the property or to alterations is not intended to imply that planning or building regulations or other consents have been obtained. We have not tested any appliances, services, heating systems, fixtures or fittings and so cannot guarantee they are in good working order. Prospective purchasers should undertake their own tests, enquiries or surveys before entering into any commitment. Photographs are reproduced for general information and it must not be inferred that any item shown is included in the sale. 4. These particulars are issued on the understanding that all viewings and negotiations are conducted through the Agent.

Energy Efficiency Rating		
	Current	Potential
Very energy efficient - lower running costs		
(92 plus) A		
(81-91) B		
(69-80) C	71	77
(55-68) D		
(39-54) E		
(21-38) F		
(1-20) G		
Not energy efficient - higher running costs		
<b>England &amp; Wales</b>	EU Directive 2002/91/EC	

01689 819991

www.edmund.co.uk

